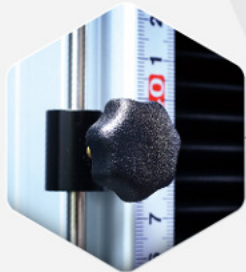


Standard

ISO 7500-1, ASTM E4, ASTM D-76, DIN 5122, JIS B7721/B7733, BS EN1002-2, BS 1610, GB/T 228

Industry

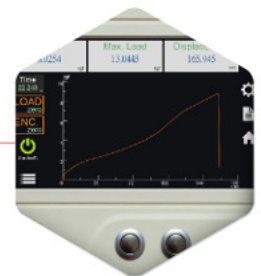
Paper, Tape, Electronics, Medical, Package and others



Limit Switch



Common Joint for Both Tensile and Compression Test



Display



Up and Down Button

Machine Description

QC-548D2 is a table-type UTM with a standard 7" color touch TFT display panel for stand-alone operation. D2 system can add the portable printer to print out test results directly, it's suitable for production line or a quick test required.

The DC motor can act similar to a servo motor by the special control of the motor and algorithm, it can correct the rotation speed to reach its best speed performance during the movement. The digital speed setting and one key start test function improve the convenience and efficiency of operation.

Users can do the tensile, compression, bending, peeling, other tests, display different languages, units switching between Imperial and Metrics by connecting the dedicated software on a PC. The software can also provide users complete analysis functions and test modules.

Machine Specification

Model	QC-548D2-S	QC-548D2-M
Max. Capacity	5 kN	
Unit	Force : gf, kgf, lbf, N, kN, ozf, tonf(SI), ton(long), tonf(short) Pressure : Kpa, Mpa, psi, bar, mm-Aq, mm-Hg	
Force Resolution	1/10,000 (23 bits)	
Force Precision	Class A: $\pm 0.5\%$ (0.5~100% of the load cell capacity) Class B: $\pm 1\%$ (1~100% of the load cell capacity)	
Test Stroke (w/o grips)	400 mm	800 mm
Stroke Resolution	0.001 mm	
Cantilever Distance	80 mm	
Speed Range	1.0~550.0 mm/min (adjusted by digital input)	
Speed Precision	3.0~550.0 mm/min $\pm 1\%$ 1.0~3.0 mm/min $\pm 5\%$	
PC-Port	RJ45 (TCP/IP) [Software is optional]	
Data Sampling Rate	Max. 1200 Hz	
Motor	DC Motor	
Machine Stiffness	4.10 kN/mm	
Hardware Safety Protection	Upper/Lower limit, Emergency Stop Button	
Software Safety Protection	Force, Displacement, Time Protection	
Power	Single Phase 100 ~ 240VAC · 5A	
Dimension	50 × 50 × 105 cm	50 × 50 × 145 cm
Weight	65 kgf	80 kgf

Machine Feature

- Supports auto-identification load cell parameter.
- Supports auto-identification displacement accessories parameter.
- Equipped with 7" color touch TFT display panel as standard accessory.
- No specification limitation of PC for connecting software.
- Independent electronic control box.

Optional Accessories



QC-557 Short Extensometer

Suitable for elongation below 50%



QC-551 Long Extensometer

Suitable for elongation over 20%.

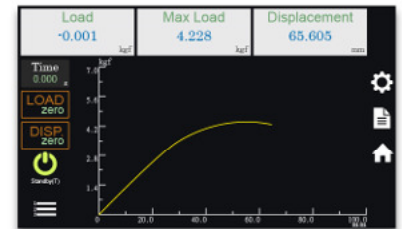
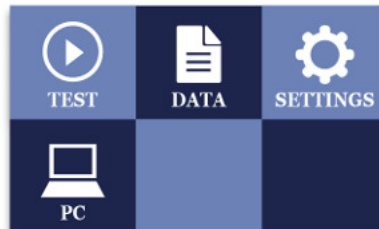


Portable Printer

Can print out results under stand-alone operation mode.

Standard Accessory - Display Panel

- 7" color touch TFT display panel is used.
- Chinese, English, Japanese are supported.
- Displays force, pressure, displacement and time.
- Can perform settings of hardware, test, units, data, protection and graph.
- Supports switching between Metric and Imperial units.
- Can save up to 50 test results.
- Can save results to USB.



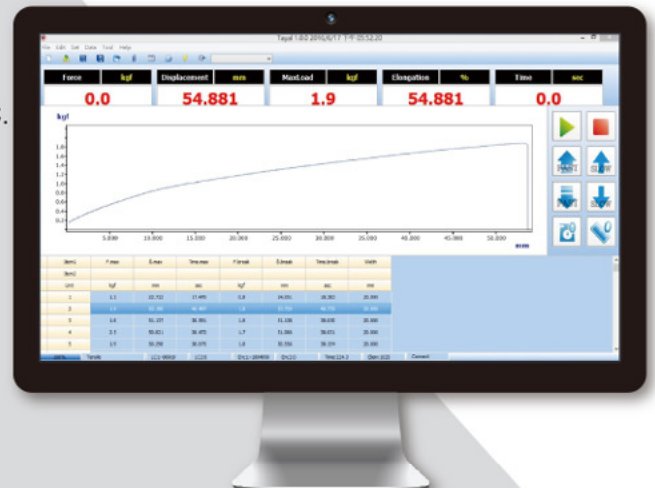
Time	Load	Max Load	Max Displacement	Max Stress	Max Elongation
0.000	-0.001	4.228	65.605		
8	20.888	9.492	2.089	47.462	
9	17.599	10.280	1.760	51.400	
10	19.558	9.355	1.956	46.775	
11	0.045	3.192	0.004	15.962	
12	0.057	0.000	0.006	0.000	

Max Load	Max. Displacement	Max. Stress	Max. Elongation
13.829	21.468	1.383	107.337
17.535	20.205	1.754	101.025
13.108	12.852	1.311	64.263
10.474	21.583	1.047	107.913
11.929	25.560	1.193	127.800

Data	
Maximum Load	Max. Displacement
Yes <>	Yes <>
Maximum Stress	Max. Elongation
Yes <>	Yes <>
Break Load	Break Displacement
No <>	No <>

Optional Accessories - Software

- The data sampling rate is up to 1200 Hz..
- Analyze data.
- Windows system required.
- Chinese, English, Japanese, Korean, Spanish are available.
- Operation Mode: TCP/IP two-way transmission to connect with PC.
- Can import multiple test data and display at the same time.
- Supports Metric and Imperial units switching.
- Provides a flexible table for data analysis.
- Can name the data results.
- Data can be shown through the table, graph, or both.
- Data processing: save, import, list, statistical comparison, and so on.
- The X-Y axis of the graph can be set as force, elongation, displacement, time, stress, strain, and so on.
- Tensile, compression, bending, peeling and others are available.
- Supports over travel, overload, over time stop conditions as machine protection.



Tensile Test



Company Information

Name: Cometech testing machine
 Address: R.O.C., Taiwan
 E-MAIL: sales@come-tech.com.tw
 Tel: +886-25368881

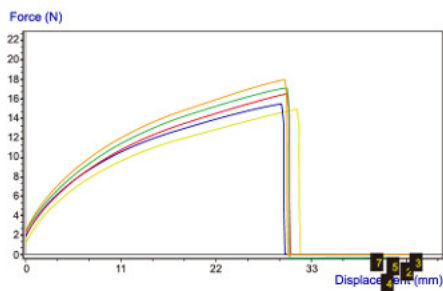
Specification

Test Speed: 500 mm/min Test Date: 2020-02-21

Data Table

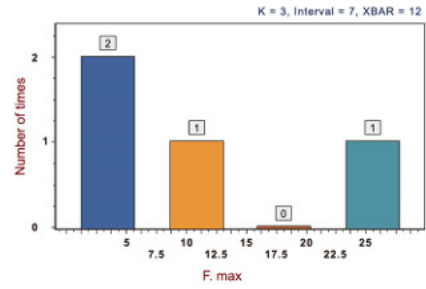
Unit	F.max	F.max/W	σ .max	σ .break	σ p.break
Unit	Breaking factor	Tensile strength	Tensile strength at break	Percent elongation at break	
Unit	N	N/mm	MPa	MPa	%
1	17.91	1	5	4	97
2	16.51	1	4	4	99
3	17.89	1	5	5	99
4	14.95	1	4	4	81
5	17.90	1	5	5	99
6	11.10	1	3	3	48
7	15.93	1	4	4	98
8	14.97	1	4	4	74
Max	17.91	1	5	5	97

Graph

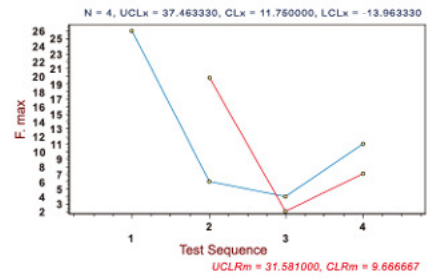


1

Histogram



Control Chart



2

*Cometech reserves the right to modify product specification.

COMETECH TESTING MACHINES CO.,LTD.

No. 49, Ln. 39, Liancun Rd., Fengyuan Dist., Taichung City 420082, Taiwan (R.O.C.)

Tel: 886-4-25368881 / Fax: 886-4-25368883

E-mail: sales@come-tech.com.tw

URL: <http://www.come-tech.com.tw>

